

● Please beware. Steep inclines and drops in this area. Please note that this walk is **not suitable** for buggies.

**POINTS OF INTEREST**

**Goram's Chair**

A pair of rugged limestone outcrops, which according to local legend provided a resting point for the giant Goram in his endeavours to create the gorge.

**POINTS OF INTEREST**

**Rhododendron walk**

Proposed by Humphrey Repton, possibly planted by J.S Harford, junior in 1830. Main variety present is the common Rhododendron ponticum.

**POINTS OF INTEREST**

**Rustic Lodge**

Built around 1840 on the instruction of J.S Harford Jrn. Cross shaped, single storey with attic, stone built then covered in bark and roots. Originally with a heavily thatched roof.

**POINTS OF INTEREST**

**Beech Cathedral**

A stand of Beech ascending the steep valley slope, planted during the 18 century and managed to provide a unique landscape feature.

**POINTS OF INTEREST**

**Jacob's Ladder**

Set of steps and steep climb from Coombe Dingle to the top of Beech Cathedral

**POINTS OF INTEREST**

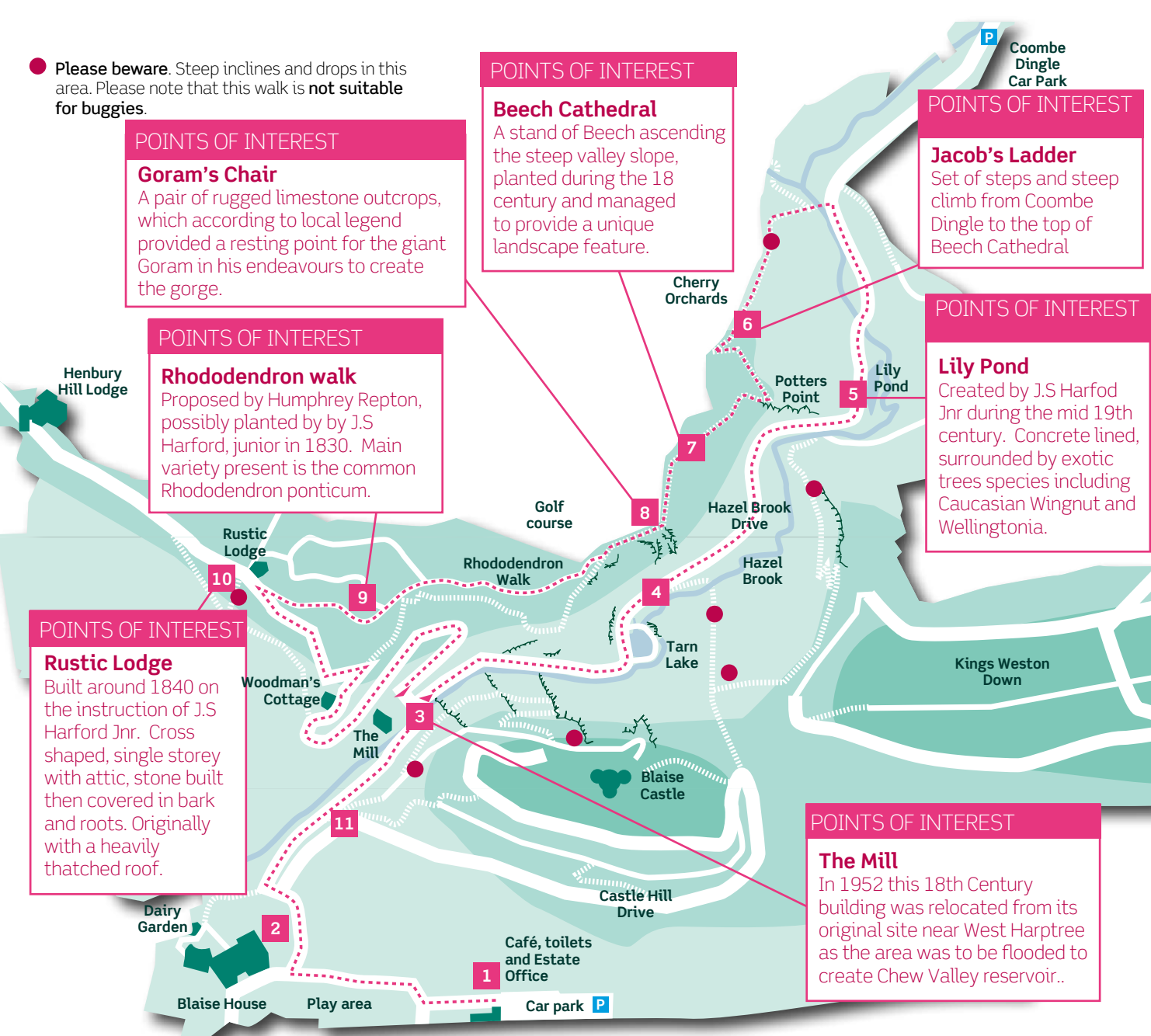
**Lily Pond**

Created by J.S Harford Jrn during the mid 19th century. Concrete lined, surrounded by exotic trees species including Caucasian Wingnut and Wellingtonia.

**POINTS OF INTEREST**

**The Mill**

In 1952 this 18th Century building was relocated from its original site near West Harptree as the area was to be flooded to create Chew Valley reservoir..



**BLAISE CASTLE ESTATE**



**Rhododendron Walk**

**route/distance**

**Approx. 3 miles/1¼ hours.** Incorporates many of the estates dramatic natural features and historical buildings.

**route difficulty**

**Hard.** The walk uses both surfaced paths and woodland trails covering a mixture of terrains. Includes steep ascents.

**points of interest**

Goram's Chair, Tarn Lake, Beech Cathedral, Lily Pond, Rhododendron Walk, Rustic Lodge, Woodman's Cottage.

Why not end your walk with a visit to Blaise café. Open daily.  
Find out about events happening in Blaise Castle by visiting:  
[www.blaisycastleestate.co.uk](http://www.blaisycastleestate.co.uk)

<b>green walk</b>	<b>Kings Weston</b> Approx. 1½ miles/ 35 mins. Easy walk	<b>blue walk</b>	<b>Gorge Walk</b> Approx. 1½ miles/ 50 mins. Hard walk	<b>orange walk</b>	<b>Castle Walk</b> Approx. 1¼ miles/ 40 mins. Easy walk	<b>purple walk</b>	<b>Royals Walk</b> Approx. 1¼ miles/ 50 mins. Easy walk
-------------------	--	------------------	--	--------------------	---	--------------------	---



# WELCOME TO BLAISE CASTLE ESTATE



Blaise Estate is a Grade II listed historic landscape with recorded human activity dating back 2,000 years. It became a 'pleasure park' to a variety of wealthy private owners and has been influenced through the landscape designer Humphrey Repton. It was purchased by the Corporation of Bristol in 1926 for £20,175.




The Heritage Lottery funded a project to restore this historic landscape and public park – an investment of approx £6.5 million. Visitor facilities including a café, play area and performance space have been introduced whilst the historic nature of the site has been conserved.

These circular guided walks have been developed to provide reassurance and information for those who wish to experience all the estate offers. This includes spectacular views, the castle folly, lakes, scheduled ancient monuments, the 18th Century mansion, unique rock formations and designed landscape features.

Varying in length, all walks will contain relatively steep ascents/descents. Care should be taken on cliff edges and steep slopes.



## contact us

-  [www.blaisycastleestate.co.uk](http://www.blaisycastleestate.co.uk)
-  [heritage.estates@bristol.gov.uk](mailto:heritage.estates@bristol.gov.uk)
-  0117 963 9174



**FRIENDS OF BLAISE**  
Bristol City Council is grateful to the generous financial contribution made by the Friends of Blaise towards production of these leaflets

**1** Start at Blaise Cafe. Walk towards the Blaise Castle House, along surfaced path with play area on left hand side.

**2** At path junction near house bear right onto path leading slightly down hill. Continue on surfaced path down into the gorge with iron railings on left hand side.

**3** Cross over Mill Bridge at bottom of hill, and take surfaced path running parallel to Hazel Brook.



**4** Continue past Tarn Lake, following the path along Hazel Brook Drive passing under Goram's Chair and then up a slight hill with Beech Cathedral rising majestically to the left.

**5** Pass Lily Pond and cross the brook. Nearing the brow of a small rise, bear left off the drive, down some steps leading to the brook.

**6** Turn left, crossing concrete sluice. Bear right following the brook, looking out for a flight of steps flanked by a stone wall on the left. Proceed up steps, known as Jacob's Ladder. Fields on the right are part of Cherry Orchard farm.

**7** The wall turns left at the top. Keep on the path until you reach a gap in the wall. Walk through this with Henbury Golf Course now on your right. The walk continues across the top of Beech Cathedral, with fine views through the trees into the Gorge below.

**8** Continue to a pair of rocky outcrops, again on your left, which form Goram's Chair. Here there are fine views across the Gorge to the Castle and Lover's Leap. Do not venture out onto the rocks. Continue until you reach a wooden bench with scenic view point towards the Bristol Channel and Wales.



**9** Continue on the same path, past an old boundary stone inscribed CB 1904, until you reach two felled Beech trunks. Bear left here and you are now in Rhododendron Walk planted in 1830, and which continues until you reach the main drive with Rustic Lodge on your right hand side.

**10** Turn left and follow surfaced path past Woodman's Cottage and continue down into the gorge.

**11** At the bottom cross over Mill Bridge, and then back up to Blaise Castle House and Cafe.

*A map of these directions is printed over leaf.*

